



# Imagine Edgenuity

2023–2024  
Louisiana  
Course List






# Core Curriculum and Electives

## English Language Arts

English Language Arts 6  
English Language Arts 7  
English Language Arts 8  
English 1 <sup>SCA</sup>  
English 2 <sup>SCA</sup>  
English 3 <sup>SCA</sup>  
English 4 <sup>SCA</sup>  
Business English <sup>SCA</sup>  
Senior Applications English  
Literacy & Comprehension I  
Literacy & Comprehension II  
Speech I <sup>SCA</sup>  
Expository Reading and Writing  
Classic Novels & Author Studies\*\*

## Mathematics

Mathematics 6  
Mathematics 7  
Mathematics 8  
Pre-Algebra  
Algebra I <sup>SCA</sup>   
Geometry <sup>SCA</sup>   
Algebra II <sup>SCA</sup>   
Algebra III  
Precalculus <sup>SCA</sup>  
Mathematical Models with Applications  
Financial Math  
Trigonometry\* <sup>SCA</sup>  
Math Essentials <sup>SCA</sup>  
Statistics  
Concepts in Probability and Statistics <sup>SCA</sup>

## Science

Science 6  
Science 7  
Science 8  
Physical Science <sup>SCA</sup>  
Biology <sup>SCA</sup>  
Chemistry <sup>SCA</sup>  
Physics <sup>SCA</sup>  
Earth Science  
Environmental Science

## Social Studies

Grade 6 World History  
Grade 7 U.S. History  
Grade 8 Louisiana History  
Middle School Survey of World History  
Middle School Modern World History  
U.S. History <sup>SCA</sup>  
World History <sup>SCA</sup>  
Modern World History  
World Geography <sup>SCA</sup>  
Civics <sup>SCA</sup>  
Free Enterprise\*  
Civics and Citizenship\*

## World Languages

### MIDDLE SCHOOL HIGH SCHOOL

Spanish 1	Spanish I <sup>SCA</sup>
Spanish 2	Spanish II <sup>SCA</sup>
French 1	Spanish III <sup>SCA</sup>
French 2	French I <sup>SCA</sup>
Chinese 1	French II <sup>SCA</sup>
Chinese 2	French III <sup>SCA</sup>
German 1	Chinese I
German 2	Chinese II
Latin 1	German I
Latin 2	German II
	Latin I
	Latin II



# Core Curriculum and Electives

## Advanced Placement

All AP courses except Computer Science Principles, English Literature and Composition, Environmental Science, French, Human Geography, Psychology, and Spanish require the purchase of textbooks. Textbooks are not included and can be ordered from online booksellers.

Biology<sup>†</sup>  
Calculus AB <sup>SCA</sup>  
Computer Science Principles  
English Language & Composition <sup>SCA</sup>  
English Literature & Composition <sup>SCA</sup>  
Environmental Science<sup>†</sup>  
French Language & Culture <sup>SCA</sup>  
Human Geography <sup>SCA</sup>  
Psychology <sup>SCA</sup>  
Spanish Language & Culture <sup>SCA</sup>  
Statistics  
U.S. Government & Politics\* <sup>SCA</sup>  
U.S. History <sup>SCA</sup>  
World History: Modern <sup>SCA</sup>

## National Test Preparation

ACCUPLACER<sup>®</sup> <sup>†</sup>  
ACT WorkKeys<sup>®</sup> <sup>†</sup>  
ACT<sup>®</sup>  
ASVAB<sup>®</sup> <sup>†</sup> (Math, Verbal, Science)  
GED<sup>®</sup> <sup>†</sup>  
HiSET<sup>®</sup> <sup>†</sup>  
PSAT<sup>®</sup> <sup>†</sup>  
SAT<sup>®</sup>

## Louisiana Test Preparation

LEAP 2025 Algebra I LEAP 2025 Geometry  
EOC English II EOC English III  
LEAP 2025 English I LEAP 2025 English II  
LEAP 2025 Science 6  
LEAP 2025 Science 7  
LEAP 2025 Science 8  
LEAP 2025 Biology  
LEAP 2025 U.S. History

## General Electives

### MIDDLE SCHOOL

Digital Literacy\*  
Health Quest\*  
Keyboarding and Applications\*  
Middle School Computer Science  
Online Learning and Digital Citizenship\*

### HIGH SCHOOL

Art History I <sup>SCA</sup>  
Computer Applications – Office 2019/Office 365  
Contemporary Health\*  
Foundations of Personal Wellness  
Healthy Living (semester)\*  
Healthy Living (full-year)  
Introduction to Art <sup>SCA</sup>  
Introduction to Computer Science  
Lifetime Fitness (semester)\*  
Lifetime Fitness (full-year)  
Personal Finance\* <sup>SCA</sup>  
Strategies for Academic Success\*

## Social Emotional Learning

Purpose Prep 6–12 runs on the Imagine Edgenuity LMS and are available at an additional cost. Purpose Prep K–5 is also available on a separate platform.



imagine  
purpose

Character & Leadership Development\*  
Climate & Culture Transformation\*  
College & Career Readiness\*  
Mental Health & Wellness\*  
Personal Development\*  
Restorative Practices and Principles\*  
Social & Emotional Success\*  
Unlock Your Purpose\*  
Trauma-Informed Living\*



# Exceptional Students Courses

These courses, designed for high school students who are three or more grade levels behind, are priced separately by enrollment.

## MATH

- Basic Math I
- Basic Math II
- Basic Algebra
- Basic Geometry

## ENGLISH LANGUAGE ARTS

- Reading and Writing I
- Reading and Writing II
- Reading and Writing III
- Reading and Writing IV

## SOCIAL STUDIES

- U.S. History Essentials
- World History Essentials
- U.S. Government Essentials
- Economics and Personal Finance Essentials

## SCIENCE

- Life Science Essentials
- Physical Science Essentials

# Career and Technical Education

CTE Electives can be added to concurrent or site licenses for an additional cost.

## Career Readiness

- Career Explorations I\*
- Career Explorations II\*
- Career Explorations III\*
- Career Explorations
- Career Management\*
- Career Planning and Development

## Career Clusters

### LOUISIANA UNIVERSAL COURSES

- Business Law\*
- Fire & Emergency Services\*
- Small Business Entrepreneurship
- Word Processing\*

### AGRICULTURE, FOOD & NATURAL RESOURCES

- Agribusiness Systems\*
- Animal Systems\*
- Food Products and Processing Systems\*
- Introduction to Agriculture, Food, and Natural Resources\*
- Plant Systems\*
- Power, Structural, and Technical Systems\*

### ARCHITECTURE AND CONSTRUCTION

- Construction Careers\*
- Introduction to Careers in Architecture & Construction\*

### ARTS, A/V TECHNOLOGY & COMMUNICATIONS

- Fundamentals of Digital Media\*

### BUSINESS MANAGEMENT AND ADMINISTRATION

- Banking Services Careers\*
- Business Computer Information Systems
- Business Information Management
- Careers in Marketing Research\*
- Introduction to Careers in Finance\*
- Principles of Business
- Keyboarding and Applications\*
- Technology and Business

### CTE ELECTIVES

- Introduction to Careers in Government and Public Administration\*

### HEALTH SCIENCE

- Careers in Allied Health\*
- Health, Safety and Ethics in the Health Environment\*
- Health Science Concepts SCA
- Introduction to Careers in the Health Sciences\*
- Health Science I
- Medical Assistant 1 <sup>†</sup>
- Medical Terminology SCA
- Nursing: Unlimited Possibilities & Unlimited Potential\*\*
- Pharmacy Technician <sup>†</sup>
- Physicians, Pharmacists, Dentists, Veterinarians & Other Doctors\*
- Public Health: Discovering the Big Picture in Health Care\*
- Therapeutics: The Art of Restoring and Maintaining Wellness\*



# Career and Technical Education

CTE Electives can be added to concurrent or site licenses for an additional cost.

## Career Clusters (continued)

### HOSPITALITY AND TOURISM

- Food Safety and Sanitation\*
- Marketing and Sales for Tourism and Hospitality\*
- Planning Meetings and Special Events\*
- Sustainable Service Management for Hospitality & Tourism\*
- Transportation and Tours for the Traveler\*

### HUMAN SERVICES

- Family and Community Services\*
- Introduction to Careers in Education & Training\*
- Introduction to Consumer Services\*
- Introduction to Human Growth and Development\*
- Introduction to Human Services\*
- Personal Care Services\*
- Teaching and Training Careers\*

### INFORMATION TECHNOLOGY

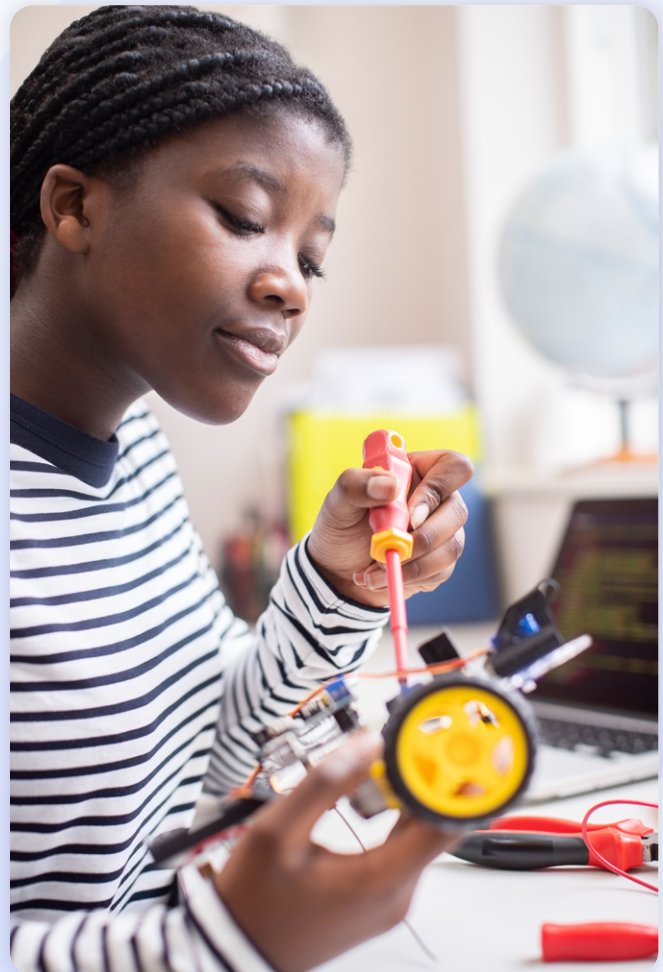
- Computer Science Principles
- Engineering and Design\*
- Engineering and Product Development\*
- Fundamentals of Computer Systems\*
- Fundamentals of Programming & Software Development\*
- Introduction to Computer Science
- Principles of Information Technology
- Introduction to Information Technology Support & Services\*
- Introduction to Network Systems\*
- Introduction to Programming\*
- Introduction to STEM\*
- Network System Design\*
- New Applications: Web Development in the 21st Century\*
- Science and Mathematics in the Real World\*
- Scientific Discovery and Development\*
- Scientific Research\*
- Software Development Tools\*
- STEM and Problem Solving\*

### LAW, PUBLIC SAFETY, CORRECTIONS & SECURITY

- Introduction to Law, Public Safety, Corrections, & Security\*
- Law Enforcement Field Services\*
- Corrections: Policies and Procedures\*
- Forensics: Using Science to Solve a Mystery\*
- Legal Services\*
- Security and Protective Services\*

### TRANSPORTATION EDUCATION

- Careers in Logistics Planning and Management Services\*
- Introduction to Careers in Transportation, Distribution, and Logistics\*



# Subscription-based Electives

These electives are priced separately by enrollment.

## Career and Elective Courses by eDynamic Learning

Imagine Edgenuity offers a suite of eDynamic Learning electives on a subscription basis, allowing students to pursue a large range of interests in language arts, creative arts, STEM, and CTE. These electives are priced separately by enrollment.

### MIDDLE SCHOOL ELECTIVES

- Middle School 2D Studio Art 1A\*
- Middle School 2D Studio Art 1B\*
- Middle School Coding 1A\*
- Middle School Coding 1B\*
- Middle School Digital Art & Design 1A\*
- Middle School Digital Art & Design 1B\*
- Middle School Exploring Music 1A\*
- Middle School Exploring Music 1B\*
- Middle School Game Design 1A\*
- Middle School Game Design 1B\*
- Middle School Journalism 1A\*
- Middle School Journalism 1B\*
- Middle School Photography 1A\*
- Middle School Photography 1B\*

### HIGH SCHOOL ELECTIVES

- African-American History\*
- American Sign Language 1A\*
- American Sign Language 1B\*
- American Sign Language 2A\*
- American Sign Language 2B\*
- American Sign Language 3A\*
- American Sign Language 3B\*
- Anthropology 1\*
- Anthropology 2\*
- Archaeology\*
- Creative Writing\*
- Ethnic Studies 1A\* **new**
- Gothic Literature\*
- History of the Holocaust\*
- Lord of the Rings: An Exploration of the Films and Their Literary Influences\*†
- Mythology & Folklore\*
- Personal Psychology 1\* **new**
- Personal Psychology 2\* **new**
- Philosophy\*
- Social Problems 1\*
- Social Problems 2\*
- Sociology 1\* **new**
- Sociology 2\* **new**
- Theater, Cinema, Film Production 1A\*†
- Theater, Cinema, Film Production 1B\*†
- Women's Studies: A Personal Journey Through Film\*†
- World Religions\*

### AGRICULTURE, FOOD, AND NATURAL RESOURCES

- Agriscience 1A\*
- Agriscience 2A\*
- Agriscience 2B\*
- Biotechnology 1A\* **new**
- Biotechnology 1B\* **new**
- Forestry\* **SCA**
- Principles of Agriculture, Food, and Natural Resources\*
- Veterinary Science\* **SCA**

### ARTS, AUDIO/VIDEO TECHNOLOGY, AND COMMUNICATIONS

- 3D Modeling 1A\* **new**
- 3D Modeling 1B\* **new**
- Animation 1A\*
- Animation 1B\*
- Digital Photography 1A\*
- Digital Photography 1B\*
- Digital Photography 2\*
- Journalism 1A\*
- Journalism 1B\*
- Music Appreciation\* **SCA**
- Public Speaking 1A\*
- Public Speaking 1B\*
- Social Media\* **SCA**

### BUSINESS, MANAGEMENT, & ADMINISTRATION **new**

- Business in a Global Economy\* **SCA**
- Human Resource Management 1A\*
- Human Resource Management 1B\*
- Legal Admin Specialist 1A\*
- Legal Admin Specialist 1B\*
- Management 1A\*
- Management 1B\*
- Medical Office Administration 1A\*
- Medical Office Administration 1B\*
- Office Administration 1A\*
- Office Administration 1B\*

### EDUCATION & TRAINING

- Early Childhood Education 1A\*
- Early Childhood Education 1B\*
- Real World Parenting\*

### ENERGY

- Renewable Technologies 1A\*
- Renewable Technologies 1B\*

### HEALTH **new**

- Allied Health Assistant 1A\*
- Allied Health Assistant 1B\*
- Biotechnician 1A\*
- Biotechnician 1B\*
- Biotechnician 2A\*
- Biotechnician 2B\*
- Dental Assistant 1A\*
- Dental Assistant 1B\*
- Dental Assistant 2A\*
- Dental Assistant 2B\*
- EKG Technician 1A\*
- EKG Technician 1B\*
- Emergency Medical Responder 1A\*
- Emergency Medical Responder 1B\*
- Medical Assistant 1A\*
- Medical Assistant 1B\*
- Medical Diagnostic Technology 1B\*
- Medical Lab Assisting 1A\*
- Medical Lab Assisting 1B\*
- Medical Lab Assisting 2A\*
- Medical Lab Assisting 2B\*
- Sports Medicine 1A\*
- Sports Medicine 1B\*
- Sports Medicine 2A\*
- Sports Medicine 2B\*

### HOSPITALITY & TOURISM

- Culinary Arts 1A\*
- Culinary Arts 1B\*
- Culinary Arts 2\*
- Hospitality & Tourism 1\*
- Hospitality & Tourism 2A\*
- Hospitality & Tourism 2B\*
- Hotel Management 1A\* **new**
- Hotel Management 1B\* **new**
- Restaurant Management\*



## HUMAN SERVICES

Cosmetology 1<sup>†</sup>\*  
Cosmetology 2<sup>†</sup>\*  
Cosmetology 3A\*  
Cosmetology 3B\*  
Fashion Design\*  
Interior Design\*  
Nutrition & Wellness\*  
Peer Counseling\*

## INFORMATION TECHNOLOGY

Advanced Networking 1A\* **new**  
Advanced Networking 1B\* **new**  
Computer Maintenance 1A\* **new**  
Computer Maintenance 1B\* **new**  
Cybersecurity 1A\*  
Cybersecurity 1B\*  
Digital Media Web Design 2A\* **new**  
Digital Media Web Design 2B\* **new**  
Foundations of Game Design 1A\*  
Foundations of Game Design 1B\*

Game Design 2A\* **new**  
Game Design 2B\* **new**  
Network Security Fundamentals 1A\* **new**  
Network Security Fundamentals 1B\* **new**  
Operational Cybersecurity 1A\* **new**  
Operational Cybersecurity 1B\* **new**  
Web Development 2A\* **new**  
Web Development 2B\* **new**

## LAW, PUBLIC SAFETY, CORRECTIONS, AND SECURITY

Criminal Justice Elective I\* **SCA**  
Criminology\* **SCA**  
Military Careers\*  
Law & Order\* **SCA**  
National Security\*  
Principles of Public Service\* **SCA**

## MANUFACTURING

Manufacturing: Product Design and Innovation\*

## MARKETING

Advertising and Sales Promotion\* **SCA**  
Marketing 2A\* **new**  
Marketing 2B\* **new**  
Marketing Foundations 1A\* **new**  
Marketing Foundations 1B\* **new**  
Professional Sales and Promotion 1A\* **new**  
Professional Sales and Promotion 1B\* **new**  
Sports & Entertainment Marketing\* **SCA**

## SCIENCE, TECHNOLOGY, ENGINEERING, AND MATHEMATICS

Astronomy 1A\*  
Astronomy 1B\*  
Concepts of Engineering & Technology\*  
Forensics Science 1\* **SCA**  
Forensics Science 2\* **SCA**  
Great Minds in Science\*  
Marine Science 1A\*  
Marine Science 1B\*

# Subscription-based Electives

These electives are priced separately by enrollment.

## Instructional Services Electives Offered with Imagine Edgenuity Teachers Only

All electives can be taught through a district teacher or a highly qualified Imagine Edgenuity instructor. However, the following electives are offered only through Imagine Edgenuity's Instructional Services to help schools further expand their course offerings with Imagine Edgenuity's instructors.

Adaptive PE\*  
Advanced PE 1 & 2  
Anatomy and Physiology **SCA**  
Comprehensive PE\*  
Concepts in Fitness\*  
Credit Recovery PE 1 & 2  
Drugs & Alcohol\*  
Exercise Science\*  
Family & Consumer Sciences\* **SCA**  
Family Life Education\*  
First Aid & Safety\*

Fitness Fundamentals 1 & 2  
Flexibility Training\*  
Group Sports\*  
Health & Personal Wellness\*  
Health Careers\*  
HOPE 1 & 2  
Individual Sports\*  
Intro to Coaching\*  
Life Skills\*  
Middle School Fitness Basics 1 & 2  
Middle School Intro to Group Sports 1 & 2

Middle School Health\*  
Middle School Intro to Individual Sports 1 & 2  
Middle School Life Skills\*  
Personal Health and Fitness\*  
Personal Training\*  
Personal Training Concepts\*  
Running\*  
Sports Officiating\*  
Strength Training\*  
Walking Fitness\*

\* One-semester course

\*\* Supplemental modules (can be used alongside other courses)

† These courses are not available via Instructional Services. Other courses are subject to teacher availability.

**H** Also available for honors

**SCA** Approved for Supplemental Course Academy

**EX** Available in EdgeEX

### Notes

AP®, Advanced Placement®, SAT®, PSAT®, and ACCUPLACER® are registered trademarks of the College Board.

ACT® and ACT WorkKeys® are registered trademarks of ACT, Inc.

ASVAB® (Armed Services Vocational Aptitude Battery) is a registered trademark of the United States Military Entrance Processing Command.

GED® is a registered trademark of the American Council on Education.





imagine  
edgenuity



[imaginelearning.com/imagine-edgenuity](https://imaginelearning.com/imagine-edgenuity)  
877-725-4257 • [solutions@imaginelearning.com](mailto:solutions@imaginelearning.com)